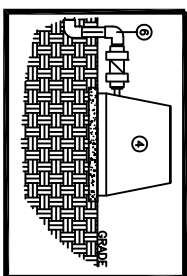


PLAN VIEW

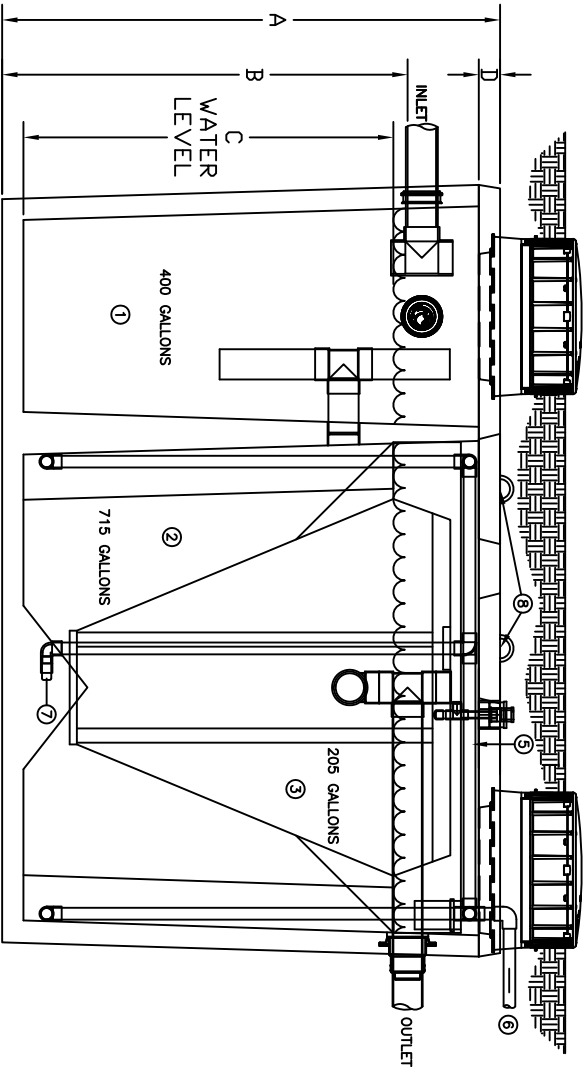
REVISIONS	DESCRIPTION	DATE

CRITICAL DIMENSIONS

A	69.00"
B	57.00"
C	52.00"
D	3.00"
E	74.50"
F	106.00"
G	65.50"
H	97.00"



TROY AIR BLOWER



SIDE ELEVATION

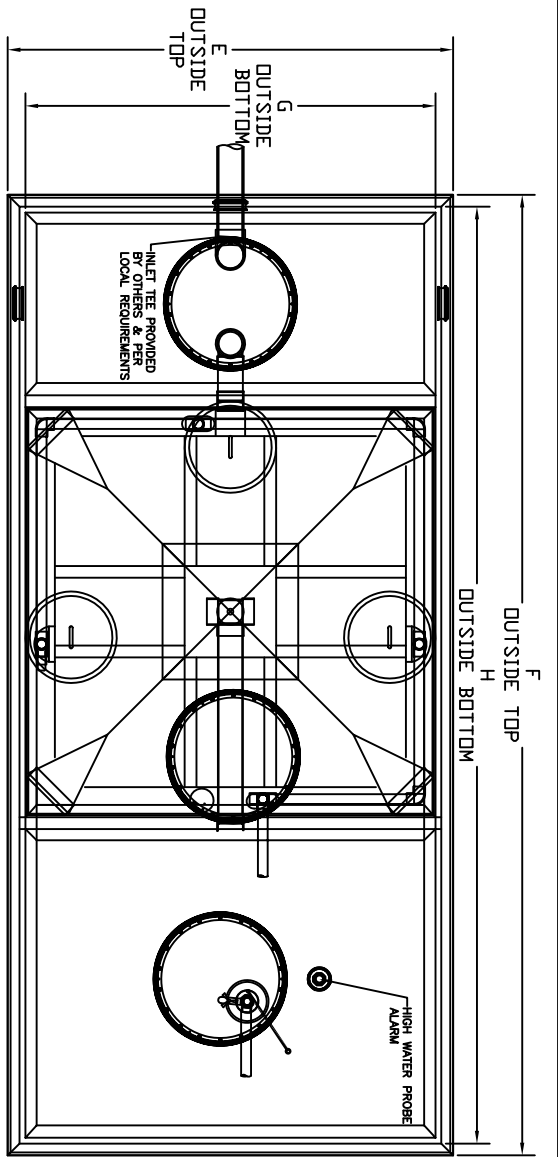
- THE H-SERIES HOOT AEROBIC TREATMENT SYSTEM
- 1) PRETREATMENT TANK- WHERE ANAEROBIC DIGESTION OCCURS AND STORAGE FOR NON-BIODEGRADABLE MATERIALS.
 - 2) AERATION CHAMBER- WHERE AIR IS INTRODUCED INTO SEWAGE FOR DIGESTION.
 - 3) CLARIFIER- A STILL CHAMBER WHERE SOLIDS SETTLE OUT AND THE CLEAR EFFLUENT RISES.
 - 4) TROY AIR LINEAR AIR BLOWER- LONG LIFE, EFFICIENT DESIGN BLOWER DELIVERS AIR TO THE TANK. MUST BE REMOTELY MOUNTED UP TO 50' FROM SYSTEM. MUST MAINTAIN 1/8" SLOPE TOWARDS TANK FOR DRAINAGE.
 - 5) AIR MANIFOLD- DELIVERS THE AIR FROM THE LINE TO THE STONES FOR DIFFUSION INTO THE SEWAGE.
 - 6) AERATION LINE- DELIVERS THE AIR FROM THE PUMP TO THE MANIFOLD. CHECK VALVE INCLUDED.
 - 7) AERATION STONE- AIR IS FINELY DIFFUSED FROM THE STONE INTO THE AERATION CHAMBER.
 - 8) 15" COVERS- PROVIDE ASSEMBLY PORT ACCESS INSIDE OF THE SYSTEM. (NOT REQUIRED FOR REGULAR SERVICE)

HOOT SYSTEMS, LLC
www.hootsystems.com

THIS DRAWING IS THE PROPRIETARY PROPERTY OF HOOT SYSTEMS, LLC. REPRODUCTION, DISCLOSURE OR USE OF ANY PART OF THIS DRAWING OR ANY INFORMATION THEREIN IS EXPRESSLY PROHIBITED WITHOUT PRIOR WRITTEN CONSENT OF HOOT SYSTEMS, LLC.

DESCRIPTION	PART #
DESCRIPTION: 600 GPD GRAVITY DISCHARGE SYSTEM H-500 A (2- RISER POLYLOK ACCESS)	H-600A (2R)

DATE: 9-7-09	DRAWN BY: AY	CHECK BY: RS	SCALE: N.T.S.
--------------	--------------	--------------	---------------

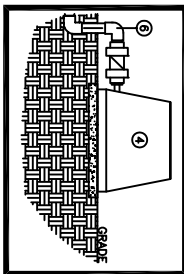


PLAN VIEW

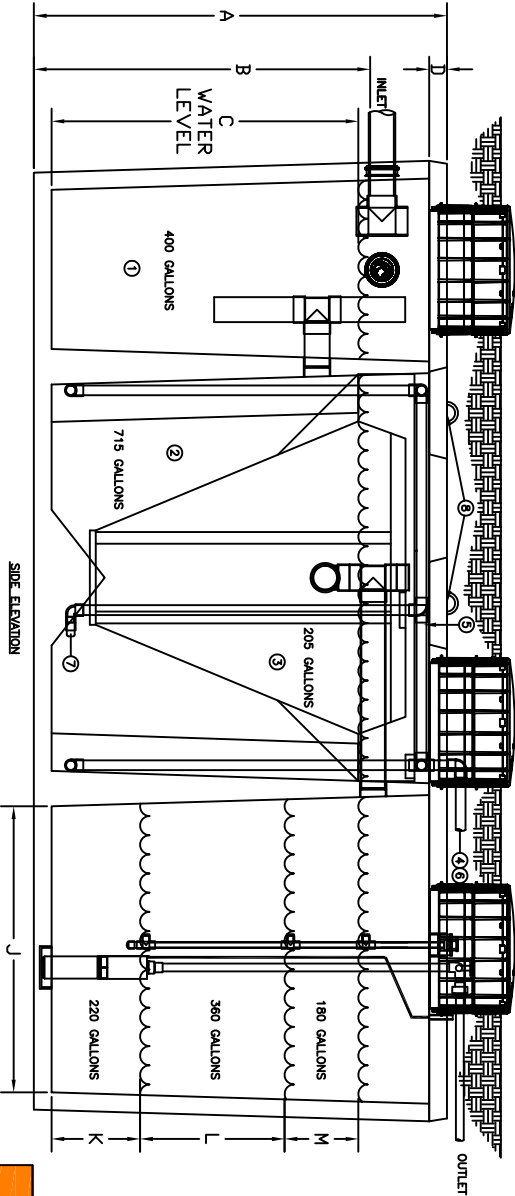
REVISIONS	DESCRIPTION	DATE

CRITICAL DIMENSIONS

A	69.00"
B	57.00"
C	52.00"
D	3.00"
E	74.50"
F	160.00"
G	65.50"
H	151.00"
J	48.50"
K	15.00"
L	24.50"
M	12.00"



TROY AIR BLOWER



SIDE ELEVATION

- THE H-SERIES HOOT AEROBIC TREATMENT SYSTEM
- 1) PRETREATMENT TANK- WHERE ANAEROBIC DIGESTION OCCURS AND STORAGE FOR NON-BIODEGRADABLE MATERIALS.
 - 2) AERATION CHAMBER- WHERE AIR IS INTRODUCED INTO SEWAGE FOR DIGESTION.
 - 3) CLARIFIER- A STILL CHAMBER WHERE SOLIDS SETTLE OUT AND THE CLEAR EFFLUENT RISES.
 - 4) TROY AIR LINEAR AIR BLOWER- LONG LIFE, EFFICIENT BLEWERS DESIGNED TO OPERATE UNDER PRESSURE AND REMOTELY MOUNTED UP TO 50' FROM SYSTEM. MUST MAINTAIN 1/8" SLOPE TOWARDS TANK FOR DRAINAGE.
 - 5) AIR MANIFOLD- DELIVERS THE AIR FROM THE LINE TO THE STONES FOR DIFFUSION INTO THE SEWAGE.
 - 6) AERATION LINE- DELIVERS THE AIR FROM THE PUMP TO THE MANIFOLD. CHECK VALVE INCLUDED.
 - 7) AERATION STONE- AIR IS FINELY DIFFUSED FROM THE STONE INTO THE AERATION CHAMBER.
 - 8) 15" COVERS- PROVIDE ASSEMBLY PORT ACCESS INSIDE OF THE SYSTEM. (NOT REQUIRED FOR REGULAR SERVICE)



HOOT SYSTEMS, LLC
www.hootsystems.com

Model A, Hoot Owl® Tanks

THIS DRAWING IS THE PROPRIETARY PROPERTY OF HOOT SYSTEMS LLC. REPRODUCTION, DISCLOSURE OR USE OF ANY PART OF THIS DRAWING OR ANY INFORMATION THEREIN IS EXPRESSLY PROHIBITED WITHOUT PRIOR WRITTEN CONSENT OF HOOT SYSTEMS LLC.

DESCRIPTION: 600 GPD PUMPED DISCHARGE SYSTEM

H-500/600 AN

PART #

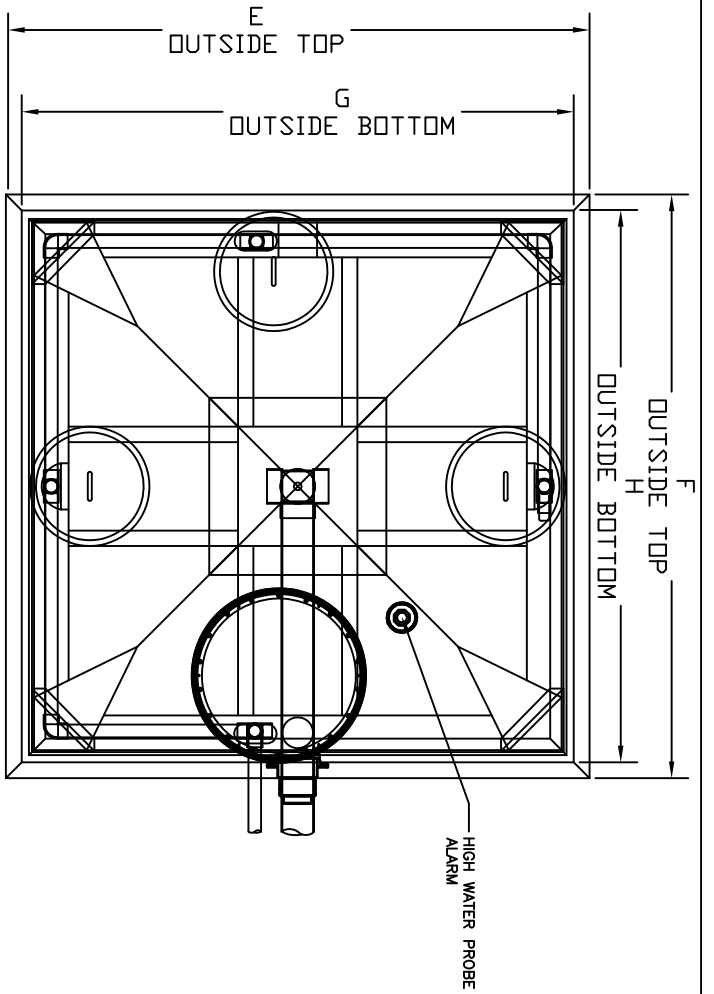
DATE: 9-7-09

DRAWN BY: AY

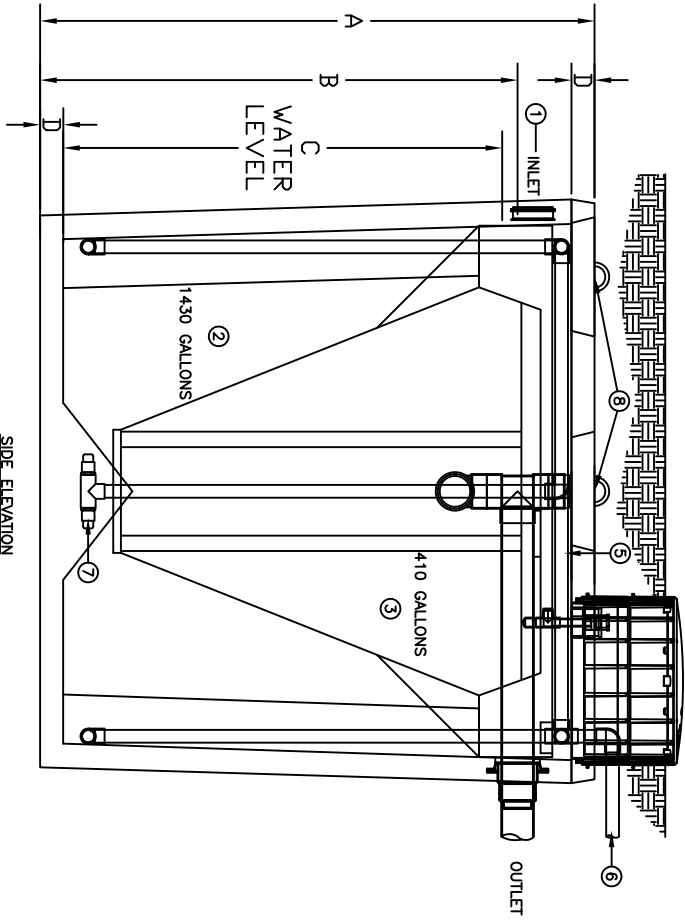
CHECK BY: RS

SCALE: N.T.S.

H-600AN



PLAN VIEW

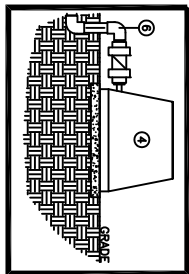


SIDE ELEVATION

REVISIONS	DESCRIPTION	DATE

CRITICAL DIMENSIONS

A	78.00"
B	69.25"
C	65.00"
D	3.00"
E	89.00"
F	89.00"
G	80.00"
H	80.00"



TROY AIR BLOWER

THE HOOT AEROBIC TREATMENT SYSTEM

- 1) SEPARATE PRETREATMENT TANK REQUIRED (MIN. 800 GALLONS)- WHERE ANAEROBIC DIGESTION OCCURS AND STORAGE FOR NON-BIODEGRADABLE MATERIALS.
- 2) AERATION CHAMBER- WHERE AIR IS INTRODUCED INTO SEWAGE FOR DIGESTION.
- 3) CLARIFIER- A STILL CHAMBER WHERE SOLIDS SETTLE OUT AND THE CLEAR EFFLUENT RISES.
- 4) TROY AIR LINEAR AIR BLOWER- LONG LIFE, EFFICIENT UNDER BELIEVED HIGH COMPRESSOR TECHNOLOGY AIR AND REMOTELY MOUNTED UP TO 50' FROM SYSTEM. MUST MAINTAIN 1/8" SLOPE TOWARDS TANK FOR DRAINAGE TO TANK.
- 5) AIR MAINFOLD- DELIVERS THE AIR FROM THE LINE TO THE STONES FOR DIFFUSION INTO THE SEWAGE.
- 6) AERATION LINE- DELIVERS THE AIR FROM THE PUMP TO THE MAINFOLD. CHECK VALVE INCLUDED.
- 7) AERATION STONE- AIR IS FINELY DIFFUSED FROM THE STONE INTO THE AERATION CHAMBER.
- 8) 15" COVERS- PROVIDE ACCESS TO EACH COMPONENT OF THE SYSTEM FOR SERVICE. ARE BROUGHT TO GRADE IE. REQUIRED PER LOCAL CODE.



HOOT SYSTEMS, LLC
www.hootsystems.com

Model A, Level 2001, 2004

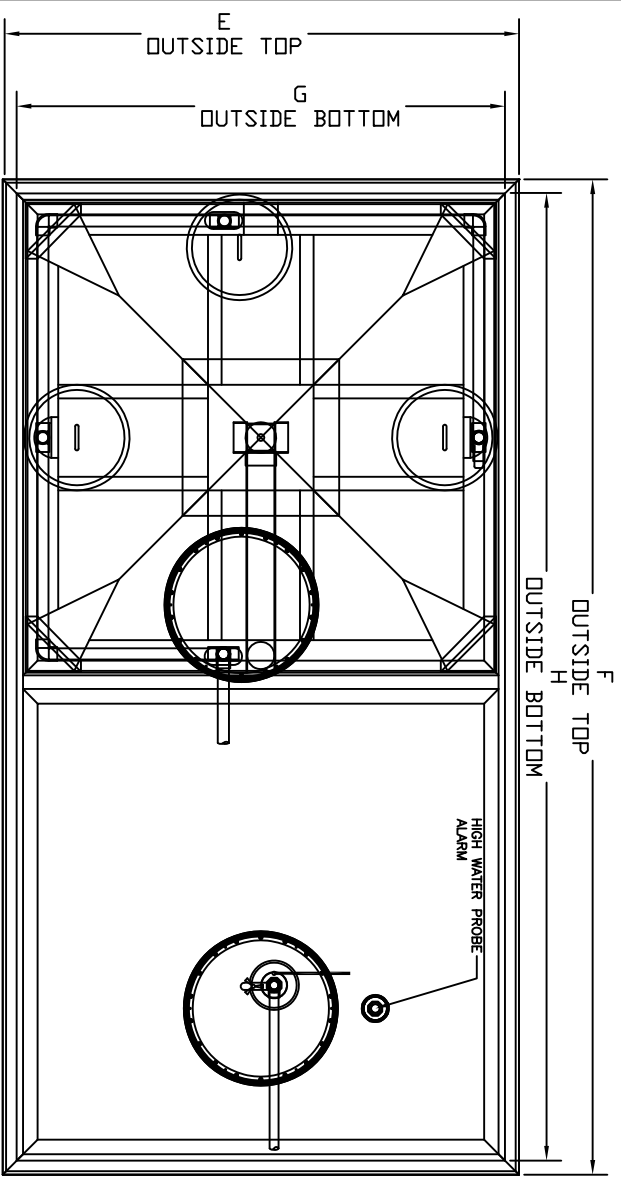
THIS DRAWING IS THE PROPRIETARY PROPERTY OF HOOT SYSTEMS, LLC. REPRODUCTION, DISCLOSURE OR USE OF ANY PART OF THIS DRAWING OR ANY INFORMATION THEREIN IS EXPRESSLY PROHIBITED WITHOUT PRIOR WRITTEN CONSENT OF HOOT SYSTEMS, LLC.

DESCRIPTION: 1000 GPD GRAVITY DISCHARGE SYSTEM
H-1000-A w/ POLYLOK ACCESS

PART #

H-1000-A

DATE: 9-7-09
DRAWN BY: AY
CHECK BY: RS
SCALE: N.T.S.

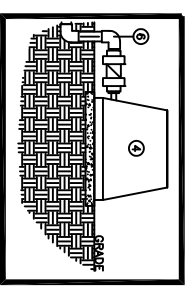


PLAN VIEW

REVISIONS	DESCRIPTION	DATE

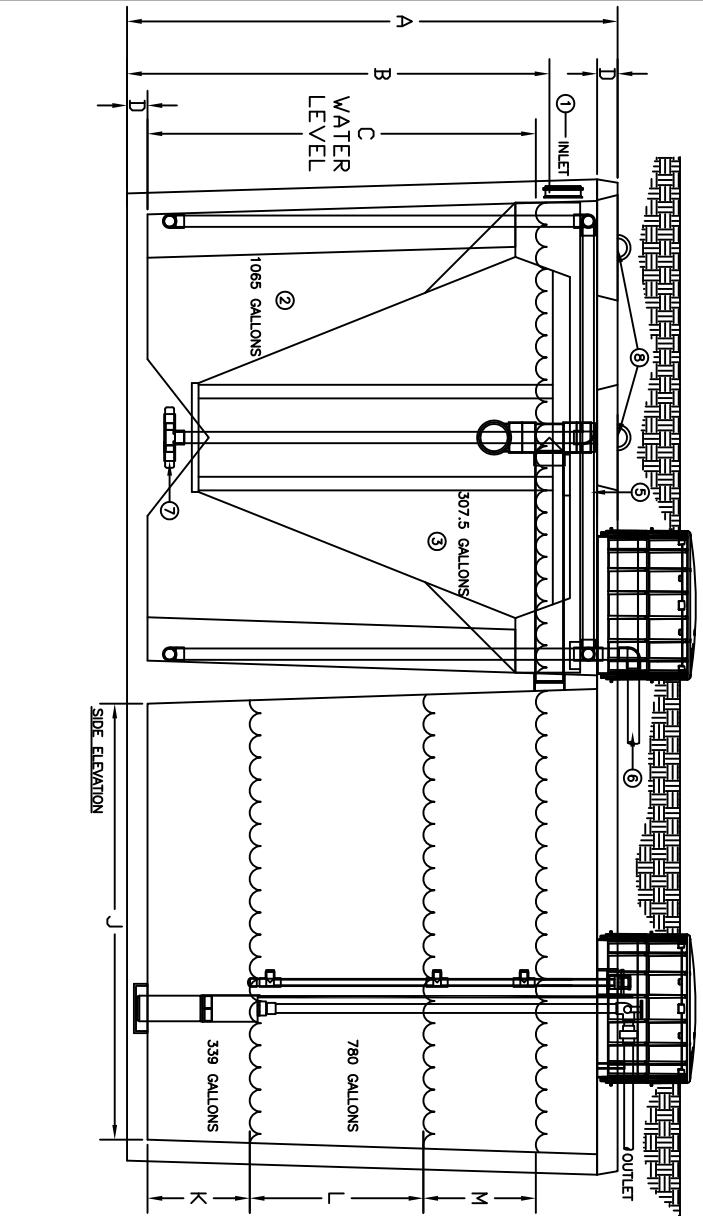
CRITICAL DIMENSIONS

A	76.00"
B	69.25"
C	65.00"
D	3.00"
E	89.00"
F	157.00"
G	80.00"
H	148.00"
J	89.50"
K	15.00"
L	32.00"
M	14.00"



TROY AIR BLOWER

- THE HOOT AEROBIC TREATMENT SYSTEM**
- 1) SEPARATE PRETREATMENT TANK REQUIRED (MIN. 800 GALLONS) - WHERE ANAEROBIC DIGESTION OCCURS AND STORAGE FOR NON-BIODEGRADABLE MATERIALS.
 - 2) AERATION CHAMBER- WHERE AIR IS INTRODUCED INTO SEWAGE FOR DIGESTION.
 - 3) CLARIFIER- A STILL CHAMBER WHERE SOLIDS SETTLE OUT AND THE CLEAR EFFLUENT RISES.
 - 4) TROY AIR LINEAR AIR BLOWER- LONG LIFE, EFFICIENT UNDER PRESSURE DELIVERS AIR TO THE TANK. MAY BE REMOTELY MOUNTED UP TO 50' FROM SYSTEM. MUST MAINTAIN 1/8" SLOPE TOWARDS TANK FOR DRAINAGE TO TANK.
 - 5) AIR MANIFOLD- DELIVERS THE AIR FROM THE LINE TO THE STONES FOR DIFFUSION INTO THE SEWAGE.
 - 6) AERATION LINE-- DELIVERS THE AIR FROM THE PUMP TO THE MANIFOLD. CHECK VALVE INCLUDED.
 - 7) AERATION STONE-- AIR IS FINELY DIFFUSED FROM THE STONE INTO THE AERATION CHAMBER.
 - 8) 15" COVERS- PROVIDE ACCESS TO EACH COMPONENT OF THE SYSTEM FOR SERVICE. ARE BROUGHT TO GRADE IF REQUIRED PER LOCAL CODE.

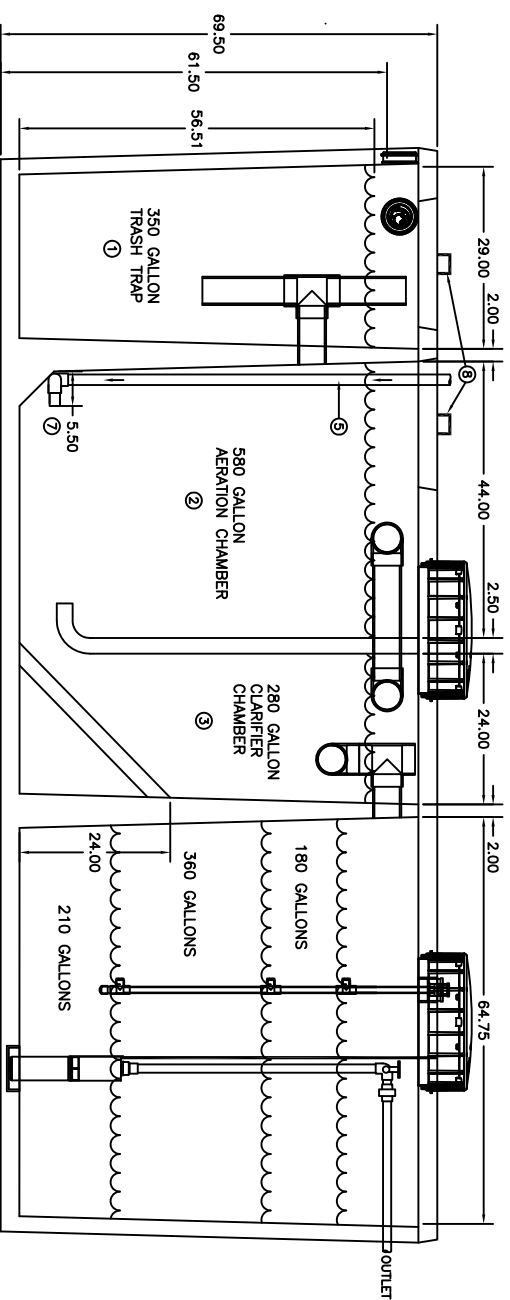
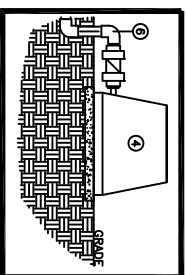
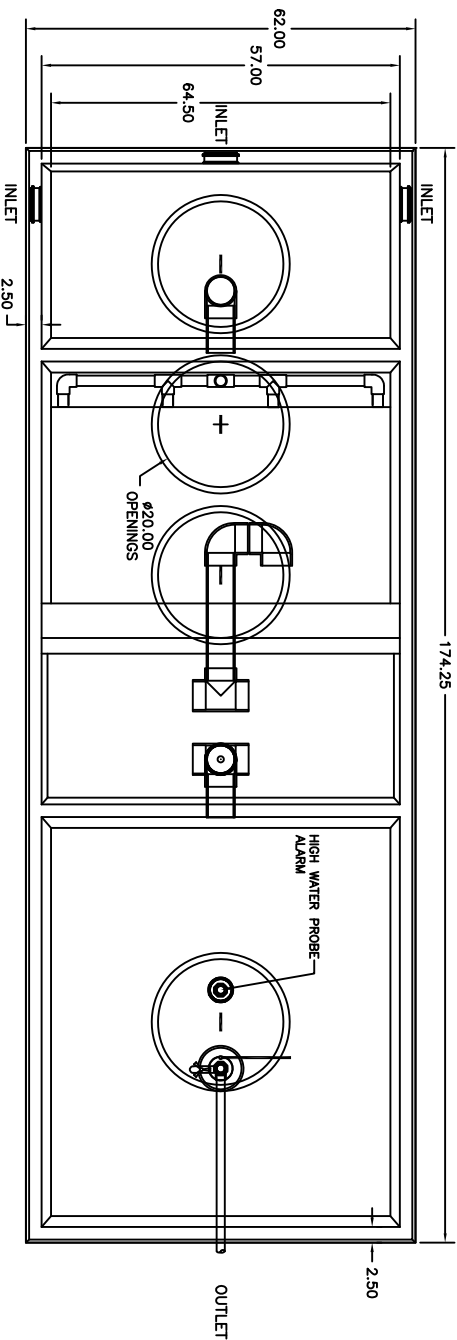


HOOT SYSTEMS, LLC
www.hootsystems.com

THIS DRAWING IS THE PROPRIETARY PROPERTY OF HOOT SYSTEMS, LLC. REPRODUCTION, DISCLOSURE OR USE OF ANY PART OF THIS DRAWING OR ANY INFORMATION THEREIN IS EXPRESSLY PROHIBITED WITHOUT PRIOR WRITTEN CONSENT OF HOOT SYSTEMS, LLC.

DATE:	DRAWN BY:	CHECK BY:	SCALE:	PART #
3-1-2010	AY	RS	N.T.S.	H-1000-AN

DESCRIPTION: 1,000 GPD PUMPED DISCHARGE SYSTEM
HOOT H-1000AN W/1469 GAL PUMP TANK



- THE LA-HOOT AEROBIC TREATMENT SYSTEM
- 1) PRETREATMENT TANK- WHERE ANAEROBIC DIGESTION OCCURS AND STORAGE FOR NON-Biodegradable MATERIALS.
 - 2) AERATION CHAMBER- WHERE AIR IS INTRODUCED INTO SEWAGE FOR DIGESTION.
 - 3) CLARIFIER- A STILL CHAMBER WHERE SOLIDS SETTLE OUT AND THE CLEAR EFFLUENT RISES.
 - 4) TROY AIR LINEAR AIR BLOWER- LONG LIFE, EFFICIENT LINEAR BLOWER WHICH COMPRESSED ATMOSPHERIC AIR AND UNDER PRESSURE DELIVERS IT TO THE TANK. MAY BE REMOTELY MOUNTED UP TO 50' FROM SYSTEM. MUST MAINTAIN 1/8" SLOPE TOWARDS TANK FOR DRAINAGE.
 - 5) AIR MANFOLD- DELIVERS THE AIR FROM THE LINE TO THE STONES FOR DIFFUSION INTO THE SEWAGE.
 - 6) AERATION LINE- DELIVERS THE AIR FROM THE PUMP TO THE MANFOLD. CHECK VALVE INCLUDED.
 - 7) AERATION STONE- AIR IS FINELY DIFFUSED FROM THE STONE INTO THE AERATION CHAMBER.
 - 8) 15" COVERS- PROVIDE ASSEMBLY PORT ACCESS INSIDE OF THE SYSTEM. (NOT REQUIRED FOR REGULAR SERVICE)

REVISIONS	DESCRIPTION	DATE



HOOT SYSTEMS, LLC
www.hootsystems.com

THIS DRAWING IS THE PROPRIETARY PROPERTY OF HOOT SYSTEMS, LLC. REPRODUCTION, DISCLOSURE OR USE OF ANY PART OF THIS DRAWING OR ANY INFORMATION THEREIN IS EXPRESSLY PROHIBITED WITHOUT PRIOR WRITTEN CONSENT OF HOOT SYSTEMS, LLC.

DESCRIPTION:	PART #
HOOT SYSTEMS LA HOOT 500 LA-500	HOOT LA-500
DATE: 7-21-2013	SCALE: N.T.S.
DRAWN BY: AY	CHECK BY: RS